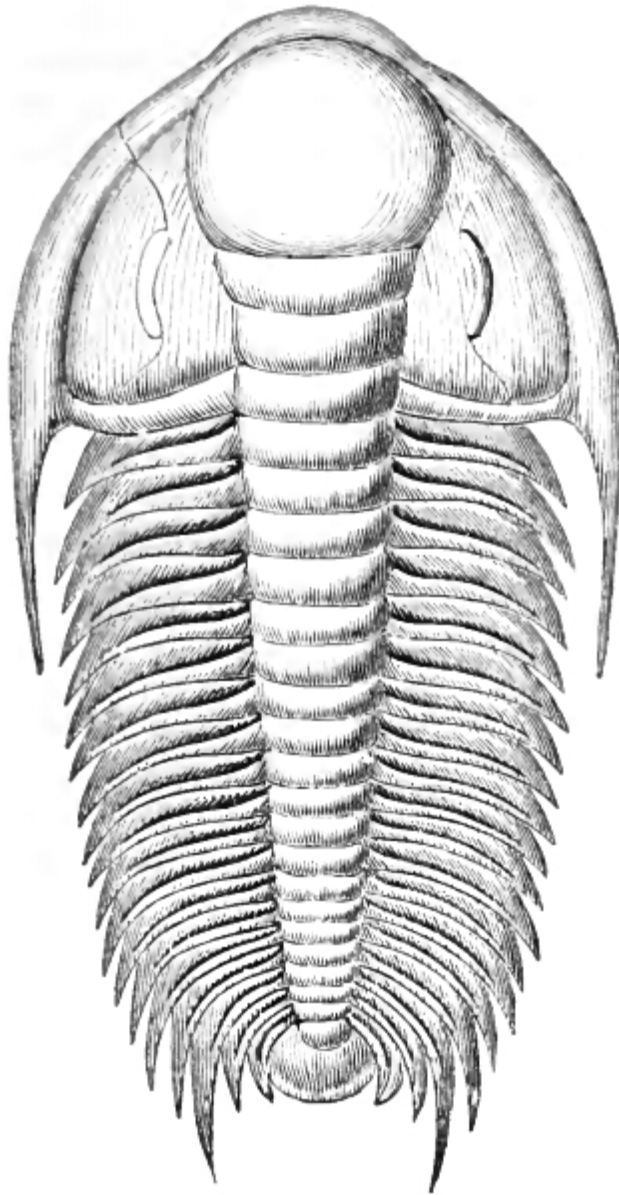


Timeline of Life



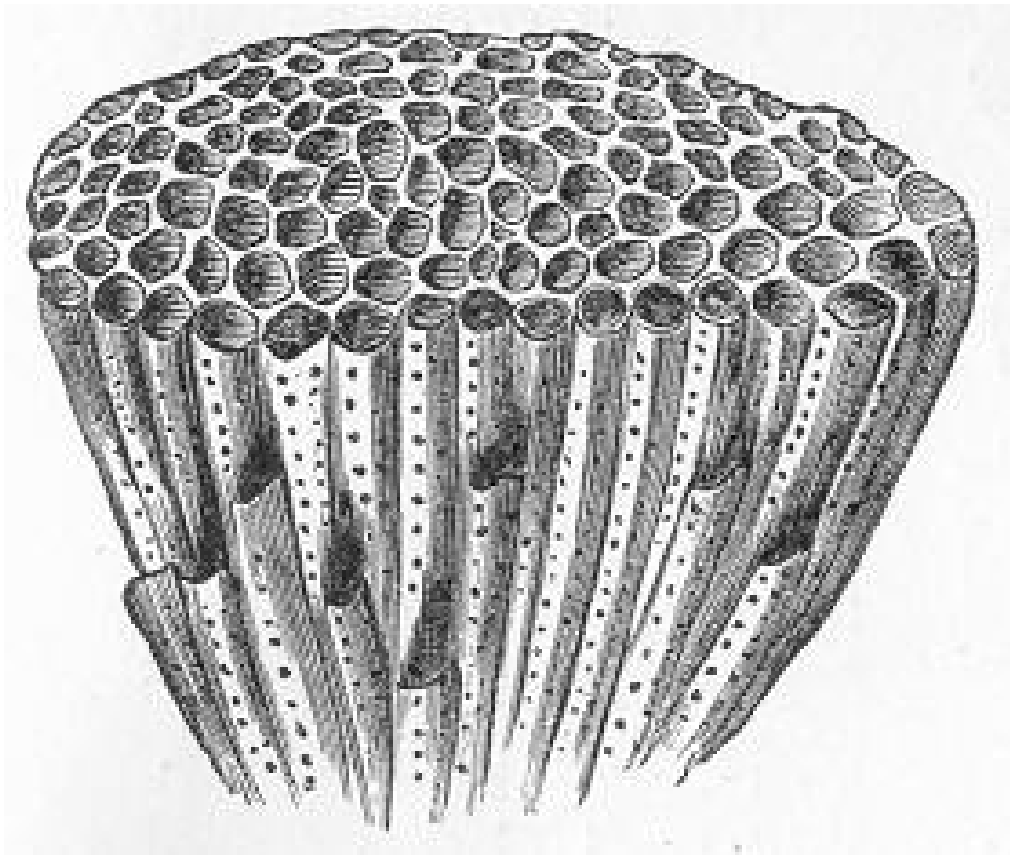
Important events in the history of life

First animals with skeleton



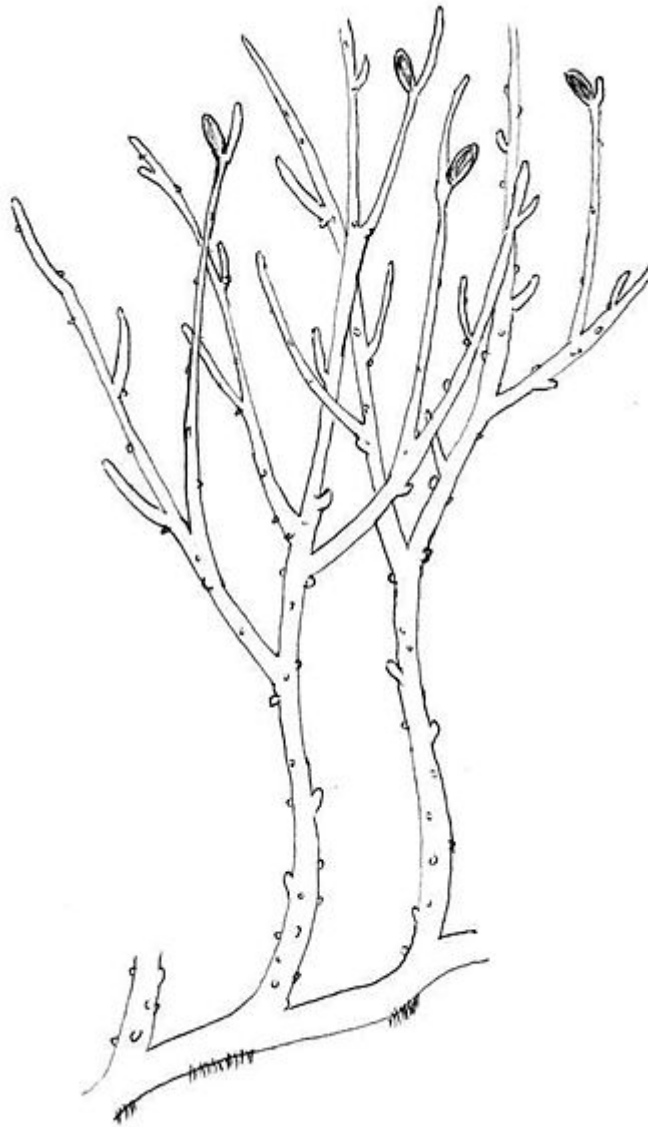
Ediacaran to Cambrian

First corals and coral reefs



Ordovician

First plants and animals on land



Silurian

Image: Griensteidl, Wikimedia Commons, after Kenrick & Crane,
1997

First amphibians



Devonian

Image: Arthur Weasley, Wikimedia Commons, based on Ahlberg, 1997

First reptiles and coal forests



Carboniferous

Image: Nobu Tamura (<http://spinops.blogspot.com>)

Largest extinction ever

***95% of species
becomes extinct***

Permian-Triassic

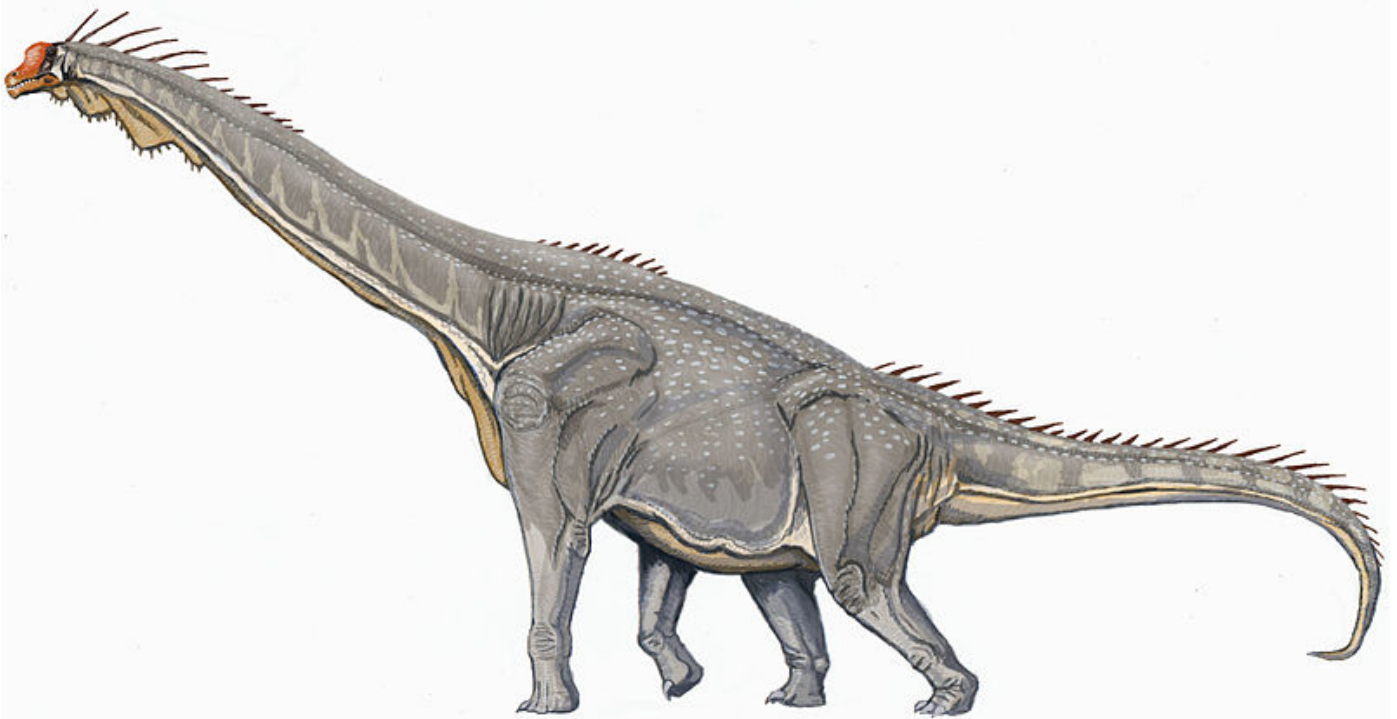
First dinosaurs



Triassic

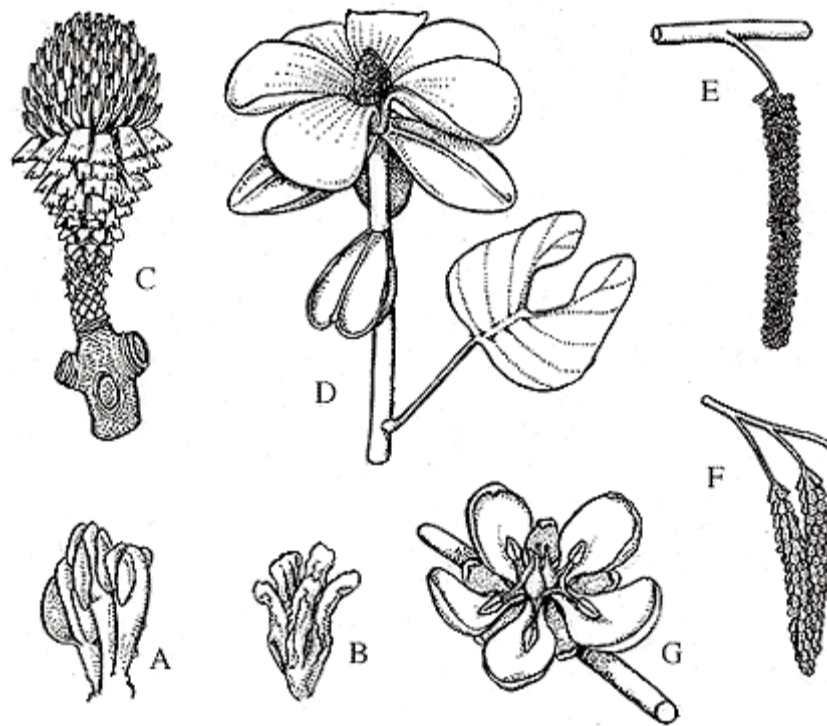
Image: John Conway, Wikimedia Commons

Dinosaurs dominate the land



Jurassic

Flowering plants become widespread



Cretaceous

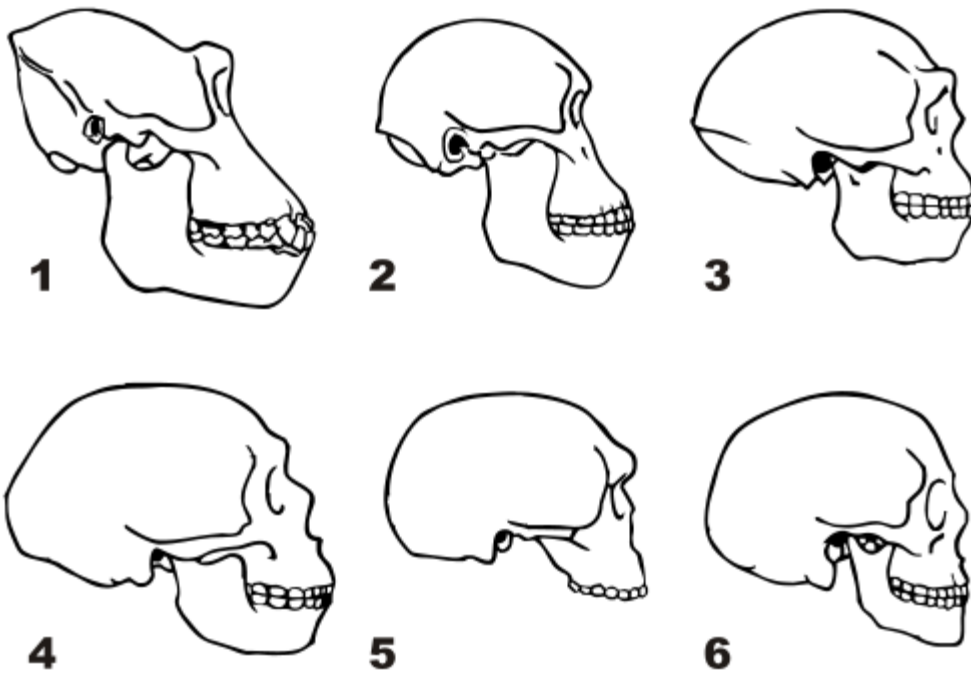
First large mammals



Paleogene

Image: Dmitry Bogdanov, Wikimedia Commons

First humans



Pleistocene

Event	Millions of years ago	Distance from present day (1 million years = ____ cm)
First humans	2	
First large mammals	40	
Flowering plants become widespread	120	
Dinosaurs dominate the land	160	
First dinosaurs	230	
Largest extinction ever	252	
First reptiles and coal forests	315	
First amphibians	370	
First plants and animals on land	430	
First corals and coral reefs	480	
First animals with skeleton	550	

Event	Millions of years ago	Distance from present day [in meters] (1 million years = 1 cm)
First humans	2	0.02
First large mammals	40	0.4
Flowering plants become widespread	120	1.2
Dinosaurs dominate the land	160	1.6
First dinosaurs	230	2.3
Largest extinction ever	252	2.52
First reptiles and coal forests	315	3.15
First amphibians	370	3.7
First plants and animals on land	430	4.3
First corals and coral reefs	480	4.8
First animals with skeleton	550	5.5